

# THE HARDY GROUP

## WEEKLY PROGRESS REPORT



**Project:** Kauai Beach Villas, Project Reoccupy – Bldgs G & H

**Address:** 4330 Kauai Beach Drive, Lihue, HI 96766

**Week Ending:** September 27, 2025

**Prepared by:** Alan Levy



### Highlights

- Concrete and PT demolition and repair at Bldg G continued

### Key Logistics

#### Work hours –

- Low noise –
  - 8:00 am to 5:30 pm Monday through Thursday
  - 8:00 am to 12:00 noon Fridays
- Loud noise - 9:00 am to 5:00 pm only

### Average Daily Work Force

**Seal Masters of Hawaii** - average of 4 workers including their onsite supervisor

**Simmons Steel** – 3 workers M-T, 2 workers W-F

**Incidents This Week:** None to report

### Key Meetings & Visits This Week

- Jarkko Simonen with WJE on site 9/23
- Daily construction meetings and OAC Meeting

- JHG on site 9/22 – 9/24
  - Supervision and documentation of work

## Description of Work

- Patch overhead spall repairs at G9 and G10
- Continued removal of PT cables, including last full length tendon and smaller pieces of transverse cables from makai lanais
- Install last new makai full-length cable
- Install scaffolding for access and temporary shoring for support of slabs with openings
- Trim lock-off openings in slabs for lock-off retainer plates
- Begin installation of PT couplers, temporary lock-offs, new end cables and anchors

## Progress Photos

- New north-south cables in red sheathing outside sliding glass door and new coupler on perpendicular transverse cable on lanai of G3





- Ends of 4 new full-length (~200') PT cables with end anchors and sheathing at G22 slab edge

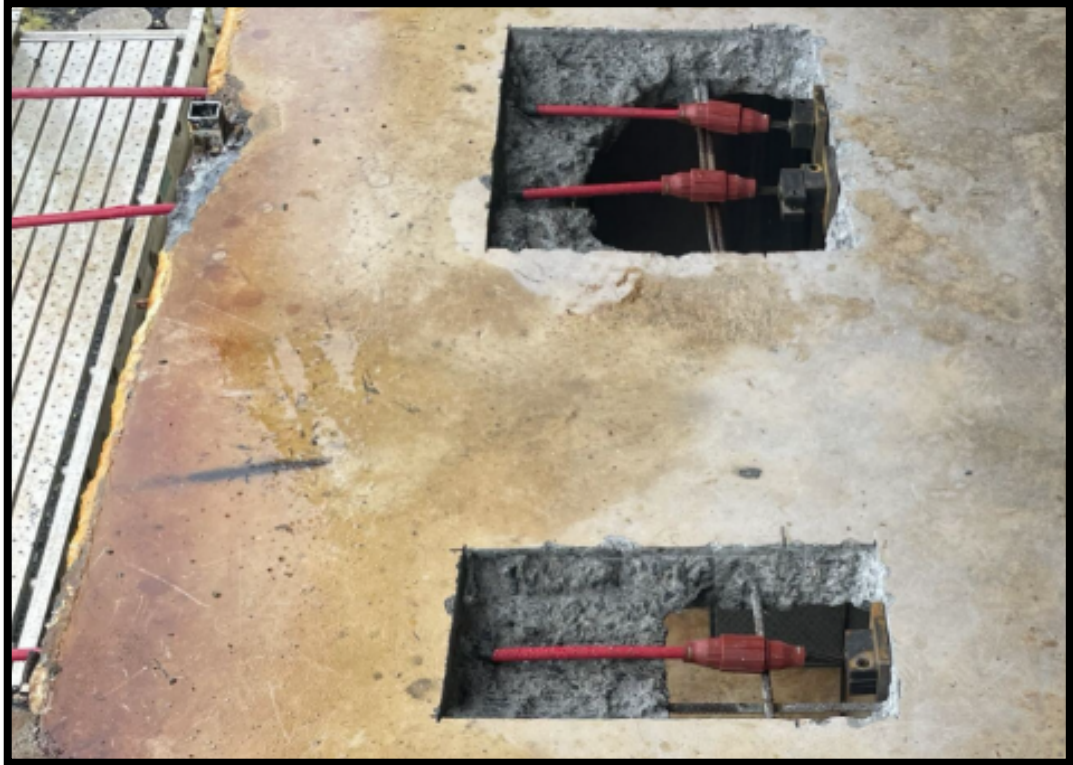


- Slab edge form for concrete patch behind and in front of end anchors





- New couplers in front of temporary lock-offs with new end cables in red sheathing





- New transverse cable ends in sheathing from couplers in front of temporary lock-offs on G22 lanai . . . .



- . . . . and at G3 lanai

